

How often will you need to see me?

This will vary from case to case. Usually several follow up visits will be needed to keep an eye on your progress and check for any problems.

Where else can I get useful information?

The Vulval Pain Society

PO Box 7804
Nottingham
NG3 5ZQ

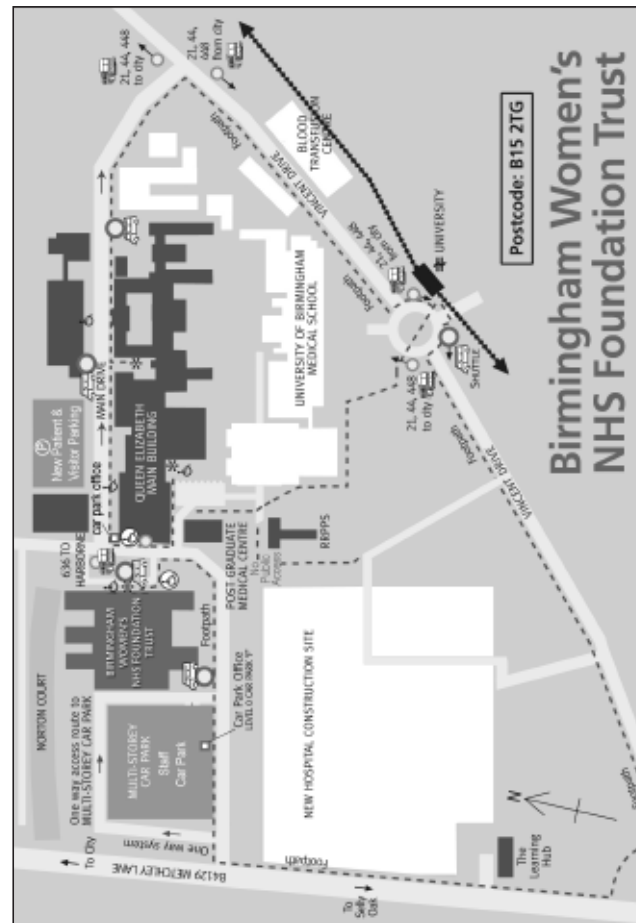
Email: inform@vulvalpainsociety.org

www.vulvalpainsociety.org/

*This website is for information purposes only.
BWFT is not responsible for the content.*

Women's Hospital Vulva Clinic

Telephone: 0121 607 4705



KEY	
Bus Stop Centro / WM	Hospital Entrance
Shuttle Bus Stop* (Pick-up and drop off 7am to 7pm)	Disabled Entrance
Car Park Office LEVEL 0 OR 1000Y	Disabled Parking
NEW HOSPITAL CONSTRUCTION SITE	Parking
The Learning HUB	Railway Station

*The Q-Park Shuttle Bus is a free service and is available from various locations around the QE site to transport patients and visitors to the main QE hospital, BWH hospital and QEP hospital buildings

Author:
Debbie Wise
Clinical Nurse Specialist

Birmingham Women's NHS
NHS Foundation Trust
Edgbaston, Birmingham B15 2TG
Tel: 0121 472 1377 Fax: 0121 627 2602



Birmingham Women's NHS
NHS Foundation Trust

Lichen Sclerosus

Vulva Clinic

Patient Information

What is wrong with me?

You have been found to suffer LICHEN SCLEROSUS or LS. This is a skin condition, which can affect all people (including men and children). It's most common in women particularly after the menopause and usually affects the skin of the vulva but may affect the skin around the back passage.

What do you mean by the vulva?

The vulva is the skin around the front passage (see diagram opposite).

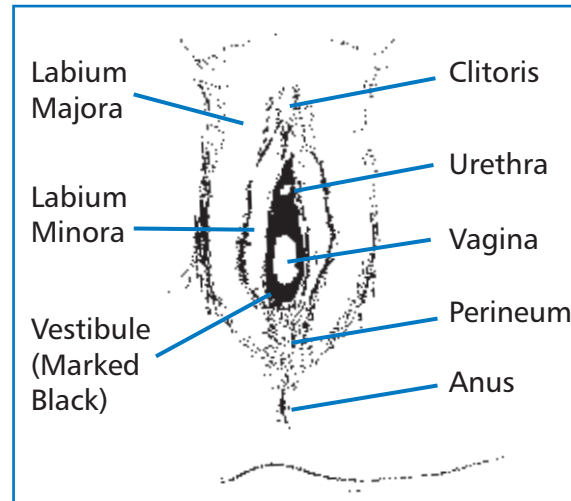
What causes it?

We don't know what causes LS. It is possible that it may run in families and there is a link with autoimmune diseases (where the body's immune system damages healthy tissue) such as thyroid disease or arthritis.

How is it diagnosed?

Some doctors can recognise LS immediately. Occasionally a skin biopsy (often using local anaesthetic) is needed.

The Vulva



What are the symptoms?

LS causes different symptoms in different people. The most common complaints are:

- Itching and soreness around the vulva (the skin around the front passage).
- Splitting and bleeding of the skin.
- Painful or difficult sex.
- Narrowing of the vaginal opening.
- Scarring of the skin (White appearance).
- Shrinking of the skin around the vulva.

Why is it important?

For 2 reasons:

- It can cause severe skin irritation.
- It is thought that LS can **rarely** turn into cancer. This probably happens in about 3 or 4 women out of every 100 with the problem.

How is it treated?

There is no cure for lichen sclerosus.

Operations are rarely of any benefit in this condition. We usually use a combination of creams and ointments to control the symptoms and stop the skin becoming damaged. **Steroid** creams are frequently prescribed and will normally bring symptoms under control. They work by reducing inflammation and skin damage. We may ask you to start off with a strong cream and gradually reduce the strength until you are comfortable. The symptoms of LS may come and go for no obvious reason. If they do come back, we usually prescribe a maintenance dose of cream to be used from time to time.

Is it harmful to use the creams long-term?

The instructions in your cream may warn against long term use or advise against use in the genital area. Some people worry that the cream will thin the skin. **We feel that using the cream is safe** and thinning of the skin does not seem to occur. The lichen Sclerosus if untreated, is more likely to damage your skin than the steroid cream.