

Birmingham Women's Hospital 32nd Annual Clinical Report

April 2004 - March 2005

QuickTime™ and a TIFF (Uncompressed) decompressor are needed to see this picture.



Clinical governance & audit

- Copying letters to patients initiative.
- Absence of clinical audit dept / demands on clinical staff time.
- Integrated care pathways
 - Continence
 - Early pregnancy
 - Antenatal care
 - Clinical genetics
 - Menopause
 - Low risk labour
 - MRSA

Risk management

- Introduction of root cause analysis
- Congratulations on Maternity Standards level 2 CNST

Research & Development

- Fetal Precursors of Cardiovascular Disease
- Health Technology Assessment in O&G
- Genetic Basis of Human Disease
- Women's Cancer
- Reproductive & Vascular Biology

Education Research Centre

- Evidence based medicine project
 - 187 SpRs & consultants trained in EBM
 - 45 consultants trained in Teaching EBM
- Teacher/Research Manager for critical appraisal teaching service

Undergraduate Education

- Medical
- Midwifery

Maternal mortality

- 2 (indirect) deaths

Perinatal mortality

	BWH	LWH 2003
No. babies	6774	6260
Stillbirths	54	41
Early NNDs	41	32
Late/infant deaths	6	18

Perinatal mortality rate

BWH	West Midlands 2003	England & Wales 2003	LWH 2003
14.0	10.1	8.6	11.7

Stillbirths

- N=54 (cf 53) Rate 8/1000; corrected 5.9/1000
- 4 twins (co-twin dead < 24 weeks)
- 10 congenital abnormalities
- 40 others. Role of IUGR?

Neonatal deaths

- N=45
- 25 Immaturity
 - 14 non-viable/no resuscitation
 - 2 extreme prem/unsuccessful resus.
- 15 Structural/chromosomal/genetic abnormalities
- 3 Birth asphyxia
- 3 TTTs

Preterm birth

- 9.4%

Vitamin A trial

- 700 women.
- Namitambo.
- Ultrasound < 24 weeks
- Singleton pregnancies.
- Screening haemoglobin < 11g/dl.
- 5000 IU vitamin A v 10000 IU v placebo.

Vitamin A trial

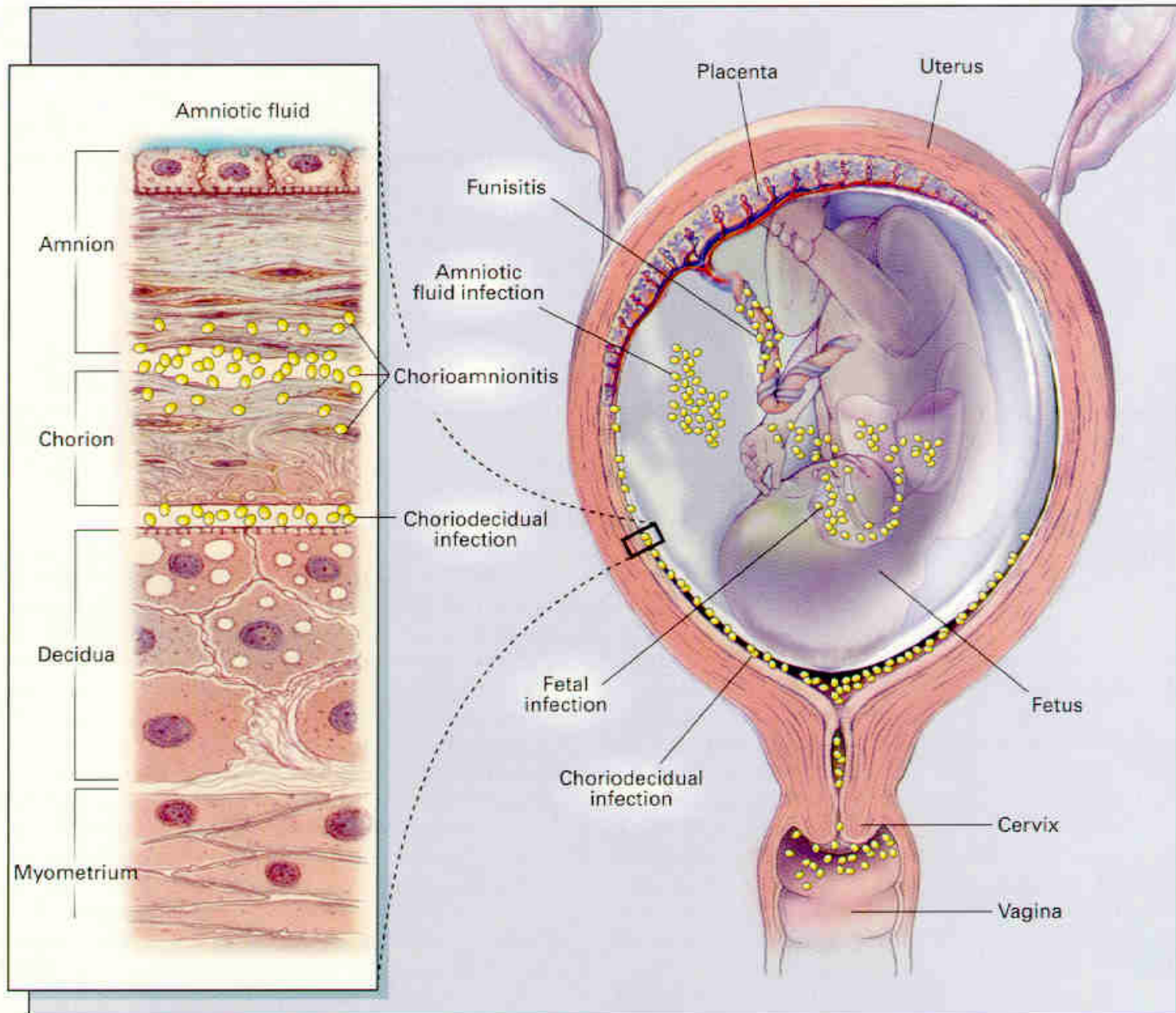
- Preterm delivery (< 37 weeks)
 - 24.7% overall
 - 29.7% Hb < 8g/dl
 - 7% internationally
 - 15% Maputo

Dating study

- Namitambo & Thyolo
- 512 women
- Biparietal diameter < 24 weeks
 - 453 (89%)
 - Mean GA 38.0 weeks SD 3.7
 - Preterm delivery 20.3%
 - 16% 33-36 weeks
 - 4.4% 24-32 weeks
 - Low birthweight (<2.5 kg) 13.3%

Dating study

- Perinatal mortality
 - 24-32 weeks 75%
 - 33-36 weeks 16%
 - \geq 37 weeks 3.4%



Namitambo

- 565 women
- Syphilis 10%
- Malaria 33%
- HIV 34%
- Bacteriuria 3%
- 78% abnormal vaginal microbiology
 - Candidiasis 40%
 - Trichomoniasis 25%
 - Bacterial vaginosis 17%



- APPLe STUDY
- Azythromycin 1g v placebo
- 16-24 and 28-32 weeks
- 2300 women recruited.

- 4 million babies die during first month of life each year
 - 75% during first week
 - 99% in low income countries
 - Major causes:
 - Preterm birth 28%
 - Infection 26%
 - Asphyxia 23%
- Lawn et al Lancet 2005;365:891-900

Twin deliveries

	BWH	LWH 2003
Both vaginal	66	45
Both CS	54	70
Vaginal/CS	8	3

Breech deliveries

	BWH	LWH 2003
Vaginal	78	16
CS	163	207

Caesarean section

	BWH	LWH 2003
Overall	23%	23%
'Standard primip'	11%	11%

Birth Centre

- Congratulations on 1st birthday and integrated care pathway for natural birth (1st in England).
- Problem = closures (10-15%)
- Birth centre births 617
 - Water births 72
 - Apgar < 7 (5) 2
- Transfers to main DS 468
- Overall CS 5.4%

Fetal medicine

	BWH	LWH 2003
Amniocentesis	283	312
Chorion villus sampling	125	65
Placental biopsy	59	0
Fetal transfusion	42	28

Neonatal Unit

- Fewer in utero transfers
- More (53) ex utero transfers
- Excellent results
 - 15/18 (83%) babies admitted < 750g went home
 - Only 1 complaint

Gynaecology

- Highlights
- Nurse vulvoscopy
- Posterior IVS for vault prolapse
- Launch integrated pathway for early pregnancy bleeding
- Menopause Nurse Specialists & national training programme for nurses
- HTA grant (£1.2m) for Mirena RCT in primary care

IVF

	BWH	LWH
IVF	28%	27%
ICSI	31%	26%

Anaesthetics

- Epidural rate 21%
- Dural taps (14) slightly > RCA guidelines
- 2 failed intubations - appropriately managed
- 12 post-spinal headaches (7 patches)
- Satisfaction survey (epidurals and CSE)
- 312 admissions HDU
 - Pre-eclampsia (37%)
 - Haemorrhage (31%)

Clinical Genetics

- Now 50 WTE staff
- National Genetics Education Centre staff recruited
- To develop service into mainstream medicine - neurometabolic, paediatric neurology and renal joint clinics established
- Pegasus project?
- Screening practitioner project?

NHS National Genetics & Development Centre

- Learning genetics
 - Meet needs of healthcare staff
- Teaching genetics
 - Resources for educators
- Developing services for genetics
 - Enable NHS to accommodate results of education
 - www.geneticseducation.nhs.uk

Regional Genetics Laboratory

- Large investment for laboratory modernation
- > 27,000 samples analysed yearly
- Fully computerised image analysis in cytogenetics
- Rapid prenatal diagnosis by QF-PCR
- Introduction of micro-array analysis in selected groups

Clinical Chemistry

- 'Integrated test' for DS introduced (2/42 trusts)
 - Sensitivity 87.5%
 - Specificity 97.8% (2.2% false positives)

Perinatal pathology

- 672 perinatal autopsies

Dietetics

- Continued input into diabetic pregnancy service
- Encourage referrals BMI > 35.

Challenges from 2004

- Staffing!
- Matrons roles & responsibilities
- Social services
- Mental health strategy
- Networks for complex care
- Substance abuse
- The NSF
- More guidelines

New challenges

- More focussed research strategy?
- Recruitment to major trials?
- Recruitment to specialties
- Maternal morbidity
- Neonatal morbidity
- IUGR?
- Gynaecological follow up.

■ Thank you!